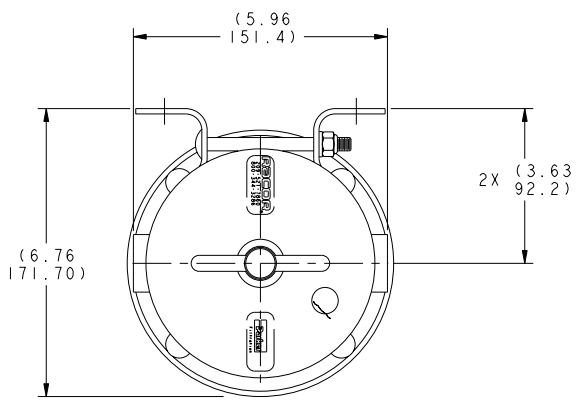
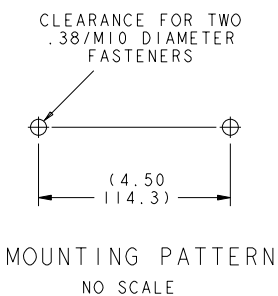


D		MISC. DRAWING UPDATES		---	052200	GG	GG	REVISIONS			
LTR	DESCRIPTION	E. N.	DATE	DRN	CHK						
-	ISSUED DRAWING	---	041791	AB	AB						
A	ADDED NEW LID & REVISED DIMENSIONS ACCORDINGLY. ADDED PRODUCT SPECS.	---	090793	RH	GG						
B	ADDED T-HANDLE AND NEW LID AND REVISED DIMENSIONS ACCORDINGLY.	---	080795	RH	GG						
C	ADDED FLUID STATIC CAPACITY VALUE. DELETED PRODUCT LABEL DELINEATION.	---	011398	RH	GG						



TOP VIEW

PRODUCT DESCRIPTION
ALL REFERENCE DIMENSIONS ARE IN (INCH / METRIC).

- THE 900MA MARINE SERIES FUEL FILTER/WATER SEPARATOR FEATURES A PATENTED THREE STAGE FUEL CONDITIONING SYSTEM WHICH:
1. SEPARATES WATER FROM FUEL IN THE TURBINE.
 2. COALESCES WATER DROPLETS ON THE CONICAL BAFFLE.
 3. FILTERS FUEL OF SOLID CONTAMINANTS.

APPLICATION: SUCTION (VACUUM) SIDE OF FUEL PUMP
 FUEL PORT THREADS: 7/8-14 UNF-2B STRAIGHT THREADS WITH SAE J1926 O-RING BOSS PORTS. OPTIONAL: 1/2-14 NPT (SAE J476) OR M22 X 1.5 (ISO6149).
 FUEL FLOW RATE: 90 GPH (341 LPH) MAXIMUM.
 DRY WEIGHT: APPROX. 6 LBS (3 Kgs.)
 FLUID STATIC CAPACITY: .80 GALLONS (3 LITERS)
 CLEAN PRESSURE DROP: .34 PSI. (2.4 kPa) @ 90 GPH.
 TEMPERATURE RANGE: -40°/+250°F. (-40°/+121°C.)

MATERIALS
 CASTINGS: 380-1 ALUMINUM / T-HANDLE: CDA-360 BRASS.
 BOWL & COMPONENTS: HIGH-IMPACT ENGINEERED POLYMER
 FITTINGS/FASTENERS: STAINLESS OR PLATED STEEL
 COATING: ELECTROSTATIC EPOXY POWDER PAINT
 SEALS/O-RINGS: LOW-SWELL BUNA-NITRILE RUBBER
 HEAT SHIELD: STAINLESS STEEL.
 MAIN BRACKET: .125 THICK COATED CARBON STEEL.

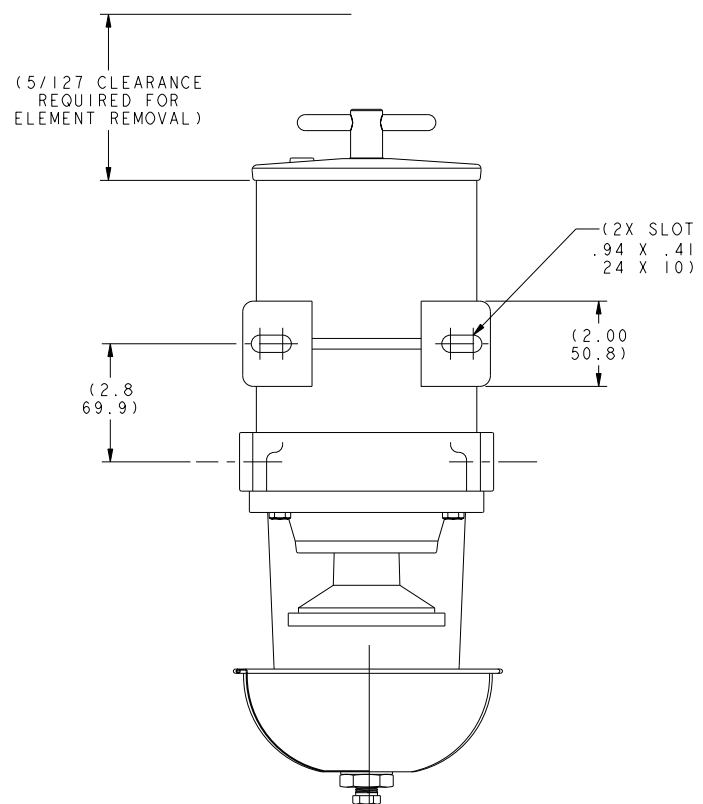
SERVICE INFORMATION (INCLUDED IN MANUAL 19466)
 INSPECT BOWL DAILY AND DRAIN ANY WATER. DO NOT ALLOW WATER TO REACH BOTTOM OF TURBINE CENTRIFUGE.

CHANGE THE REPLACEABLE ELEMENT BETWEEN 6 TO 10 INCHES OF MERCURY (20 TO 34 kPa) OR AT FIRST SIGN OF POWER LOSS. NOTE: SOME FUEL SYSTEMS REQUIRE CHANGEOUT SOONER, SOME LATER - REFER TO MANUFACTURER'S RECOMMENDATIONS.

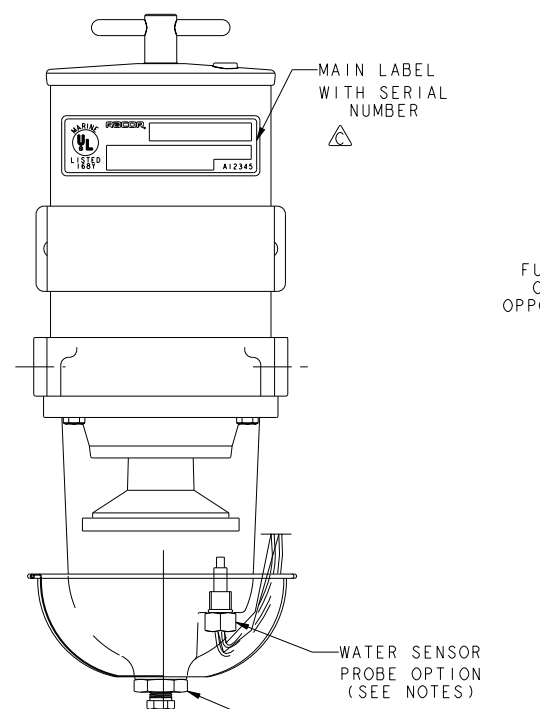
REPLACEABLE ELEMENT MICRON RATING AND PART NUMBERS.
 2 MICRON, 2040SM-OR (INCLUDES SEAL KIT)
 10 MICRON, 2040TM-OR (INCLUDES SEAL KIT)
 30 MICRON, 2040PM-OR (INCLUDES SEAL KIT)

OPTIONS
 *IN-BOWL WATER SENSOR PROBE. ALERTS OPERATOR TO DRAIN WATER AT NEXT OPPORTUNITY. MUST USE WITH SEPARATE ELECTRONIC AMPLIFIER -NOT SHOWN (PN. RK20726: AUDIBLE AND VISUAL ALARMS. WATERPROOF FACE, 2" DIA. GAUGE FOR 12/24 VDC).
 *METAL BOWL (MAM MODEL -NOT SHOWN) IS RECOMMENDED FOR SEVERE SERVICE OR GASOLINE APPLICATIONS.

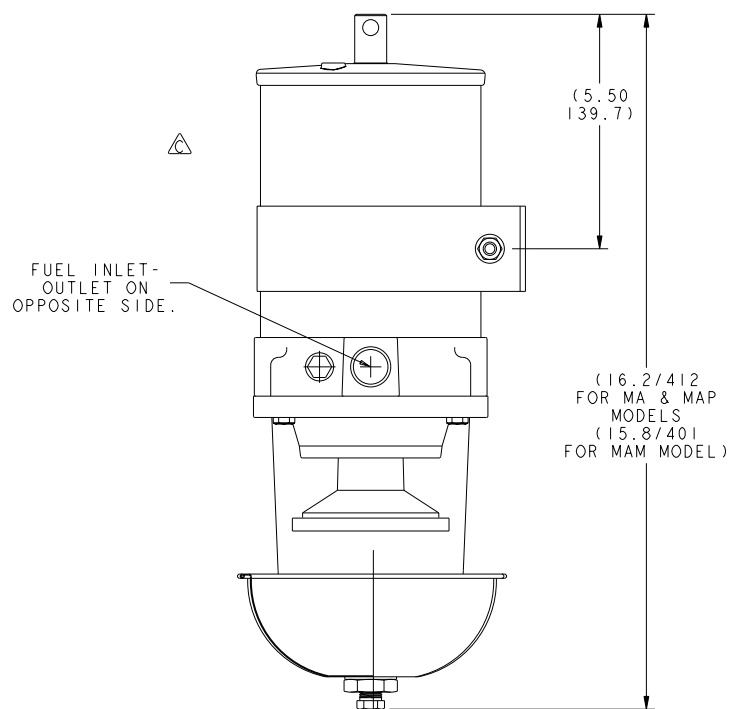
CERTIFICATIONS (DIESEL FUEL SERVICE)
 *UNDERWRITERS LABORATORIES, INC. MARINE LISTED (MQ397).
 *UL CLASSIFIED IN ACCORDANCE WITH ISO 11088 FOR CE SYSTEMS.
 *UNITED STATES COAST GUARD ACCEPTED FOR USE ABOARD INSPECTED VESSELS.
 *ABS MARINE TYPE APPROVAL NO.00-SF37508-X.
 *BUREAU VERITAS MARINE TYPE APPROVAL NO.05634/B2BV.



REAR VIEW



FRONT VIEW



SIDE VIEW

CUSTOMER INTERFACE DRAWING

QUANTITY REQD	PART NUMBER	DESCRIPTION	ITEM NO.
PARTS LIST			
REVISE ONLY ON THIS PRINT SUPERSEDES ANY EARLIER DATE DESTROY SAME	DRAWN: ARB	DATE: 6/13/89	 PARKER HANNIFIN CORPORATION RACOR DIVISION P.O. BOX 3208 MODESTO, CA 95353
	CHECK: KW	DATE: 6/13/89	
MATERIAL:		TITLE: MARINE FUEL FILTER/WATER SEPARATOR ASSEMBLY	
FINISH:		UNLESS OTHERWISE SPECIFIED: DIMENSIONS ARE IN INCHES TOLERANCES DECIMAL: .0000 ± .0003 / .0005 ± .0003 ANGULAR: ± .001 / ± .002 FRACTIONAL: ± .0005 / ± .0010	
NEXT ASSY	FIRST USED ON	SIZE: D	CODE IDENT NO.: 55752
APPLICATION		DO NOT SCALE DRAWING	DWG. NO.: 900MA
		SCALE: NONE	REV: D
		RELEASE DATE: 8/89	SHEET 1 OF 1