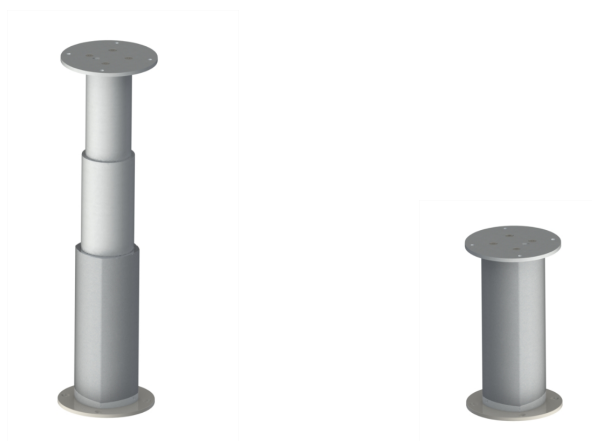


3 PARTS CYLINDRICAL ELECTRIC TABLE PEDESTAL ANODISED ALUMINUM

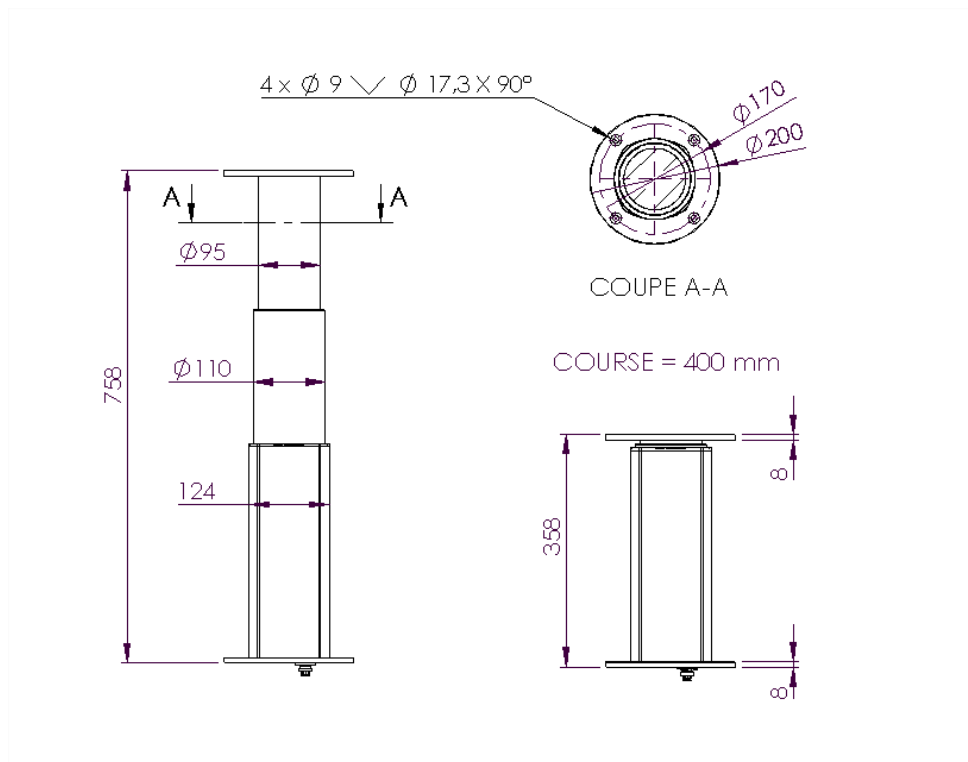
NL2408 – NL2407

2017-11-23

A. SYSTEM OVERVIEW



B. DIMENSIONS



STREET
AUTOMATION

HOME
AUTOMATION

YACHT
AUTOMATION

INDUSTRIAL
AUTOMATION

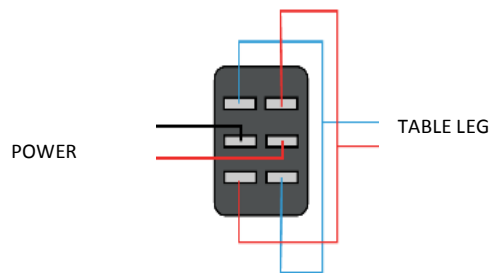
C. TECHNICAL SPECIFICATIONS

- ✓ Compression stress: 2000 N
- ✓ Dynamic bending moment: 500 Nm
- ✓ Static bending moment: 1000 Nm
- ✓ Stroke: 400 mm
- ✓ Minimum height: 358 mm
- ✓ Maximum height: 758 mm
- ✓ Speed (not loaded): 12 mm/s
- ✓ Speed (at max load): 9 mm/s
- ✓ Electric powering: 24V DC => Max Amps consumption: 5 A or 12V DC => Max Amps consumption: 10 A

D. ELECTRIC ARCHITECTURE

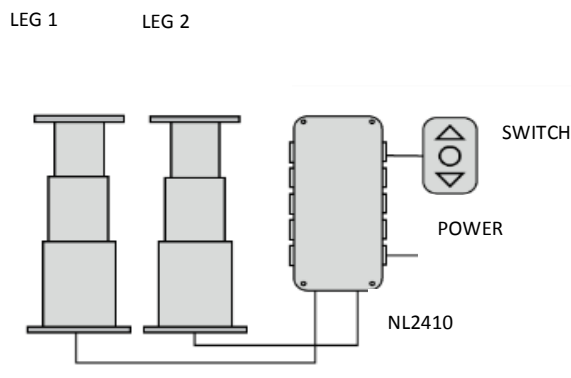
Pedestal wiring when not synchronized:

Please wire the pedestal with a MOM OFF MOM switch in order to get a polarity inversion (as shown in the sketch)



Pedestal wiring when synchronized with another one:

Table pedestals can be synchronized, 2 by 2, using the synchronization control box ref NL2410 (synchro box dimensions: 180 x 94 x 57mm).



NOVAL

23 VOIE HEMERA
ZI LAVIGNE
31190 AUTERIVE, FRANCE

Tél. : +33 (0)5 34 47 00 09
Fax : +33 (0)5 34 47 71 87

info@noval-france.com
www.noval-france.com