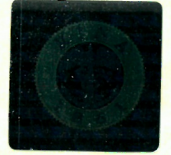




TYPE APPROVAL CERTIFICATE

N. ELE309816CS



This is to certify that the product below is found to be in compliance with the applicable requirements of the RINA type approval system.

Description	Navigation lights
Type	1141101; 1141102; 1141103; 1141104; 1141111; 1141112; 1141113; 1141114; 1141171; 1141172; 1141173; 1141174; 1141121; 1141122; 1141123; 1141124; 1141131; 1141132; 1141133; 1141134; 1141181; 1141182; 1141183; 1141184;
Applicant	Osculati Spa Via Pacinotti, 12 20090 Segrate (MI) Italy
Manufacturer	Osculati Spa Via Pacinotti, 12 20090 Segrate (MI) Italy
Testing Standards	Convention on the International Regulation for Preventing Collision at Sea. (COLREG 1972) - Ref. to Italian Law 27 th December 1977 n. 1085

Issued in **Genova** on **April 07, 2017**

This certificate is valid until **April 07, 2022**

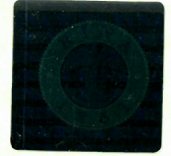
RINA Services S.p.A

Valerio Bonanni



TYPE APPROVAL CERTIFICATE

N. ELE309816CS



Navigation lights for recreational craft having length less than 20 meters

Type	Model	Light color	Lamp supply	H. Sector	Body (black)	Lens	Protection (IP)	Visibility
Port Side	1141101	Red	12Vdc 15W	112.5°	Polycarbonate	PMMA	IP 56	2 miles
Starboard Side	1141102	Green	12Vdc 15W	112.5°	Polycarbonate	PMMA	IP 56	2 miles
Masthead	1141103	White	12Vdc 15W	225°	Polycarbonate	PMMA	IP 56	3 miles
Stern	1141104	White	12Vdc 15W	135°	Polycarbonate	PMMA	IP 56	2 miles

Type	Model	Light color	Lamp supply	H. Sector	Body (white)	Lens	Protection (IP)	Visibility
Port Side	1141111	Red	12Vdc 15W	112.5°	Polycarbonate	PMMA	IP 56	2 miles
Starboard Side	1141112	Green	12Vdc 15W	112.5°	Polycarbonate	PMMA	IP 56	2 miles
Masthead	1141113	White	12Vdc 15W	225°	Polycarbonate	PMMA	IP 56	3 miles
Stern	1141114	White	12Vdc 15W	135°	Polycarbonate	PMMA	IP 56	2 miles

Type	Model	Light color	Lamp supply	H. Sector	Body	Lens	Protection (IP)	Visibility
Port Side	1141171	Red	12Vdc 15W	112.5°	Stainless steel	PMMA	IP 56	2 miles
Starboard Side	1141172	Green	12Vdc 15W	112.5°	Stainless steel	PMMA	IP 56	2 miles
Masthead	1141173	White	12Vdc 15W	225°	Stainless steel	PMMA	IP 56	3 miles
Stern	1141174	White	12Vdc 15W	135°	Stainless steel	PMMA	IP 56	2 miles

Type	Model	Light color	Lamp supply	H. Sector	Body (black)	Lens	Protection (IP)	Visibility
Port Side	1141121	Red	24Vdc 15W	112.5°	PA6+fiberglass	PC	IP 56	2 miles
Starboard Side	1141122	Green	24Vdc 15W	112.5°	PA6+fiberglass	PC	IP 56	2 miles
Masthead	1141123	White	24Vdc 15W	225°	PA6+fiberglass	PC	IP 56	3 miles
Stern	1141124	White	24Vdc 15W	135°	PA6+fiberglass	PC	IP 56	2 miles

Type	Model	Light color	Lamp supply	H. Sector	Body (white)	Lens	Protection (IP)	Visibility
Port Side	1141131	Red	24Vdc 15W	112.5°	PA6+fiberglass	PC	IP 56	2 miles
Starboard Side	1141132	Green	24Vdc 15W	112.5°	PA6+fiberglass	PC	IP 56	2 miles
Masthead	1141133	White	24Vdc 15W	225°	PA6+fiberglass	PC	IP 56	3 miles
Stern	1141134	White	24Vdc 15W	135°	PA6+fiberglass	PC	IP 56	2 miles

Type	Model	Light color	Lamp supply	H. Sector	Body	Lens	Protection (IP)	Visibility
Port Side	1141181	Red	24Vdc 15W	112.5°	Stainless steel	PC	IP 56	2 miles
Starboard Side	1141182	Green	24Vdc 15W	112.5°	Stainless steel	PC	IP 56	2 miles
Masthead	1141183	White	24Vdc 15W	225°	Stainless steel	PC	IP 56	3 miles
Stern	1141184	White	24Vdc 15W	135°	Stainless steel	PC	IP 56	2 miles



TYPE APPROVAL CERTIFICATE

N. ELE309816CS



Reference documents

Document n. 9851 020 issued by LCIE Laboratories on 18 November 1999.

Drawing stamped by RINA on 02 December 1999.

Document n. 60014 119 issued by LCIE Laboratories on 13 August 2003.

Drawing stamped by RINA on 14 October 2003.

COLREG compliance: test reports n. 0274/EU16 (18/07/2016), 0275/EU16 (18/07/2016),
0276/EU16 (18/07/2016), 0277/EU16 (18/07/2016)

Drawings:

11.411.01, 11.411.02, 11.411.03, 11.411.04
11.411.11, 11.411.12, 11.411.13, 11.411.14
11.411.21, 11.411.22, 11.411.23, 11.411.24
11.411.31, 11.411.32, 11.411.33, 11.411.34
11.411.71, 11.411.72, 11.411.73, 11.411.74
11.411.81, 11.411.82, 11.411.83, 11.411.84

Remarks

Installation and use to be according to the manufacturer instructions and COLREG Requirements.